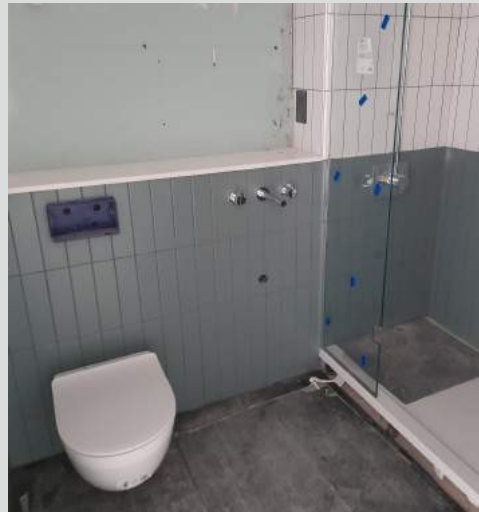




Project Info: *93 BURLEIGH GARDENS*



Welcome to our Summer update of the most rewarding project- Southgate hotel newsletter. We are writing to inform you about the ongoing and near to completion works at our hotel project at 93, Burleigh Gardens. We commenced works in November 2020 and construction works will be completed before Christmas.

Welcome to the monthly update with the news to keep you informed on our Southgate Hotel project at 93, Burleigh Gardens, London, N14 5AJ. The exterior wall construction is completed, and the external façade has windows fitted. As construction progresses, the corridor has been freshly painted, and the bathroom walls are receiving new coatings. Additionally, sanitary fittings are being completed, and all bathroom fixtures have been placed. We are collaborating with our subcontractor and other teams to ensure that work is done safely and with the least amount of inconvenience possible.

Client: [Palmer's Green Investments Ltd](#)
Architects: [Maith Design](#)
Structural Engineers: [JMS Group](#)
M&E Consultants: [BSEC Design](#)

CMT
CONSTRUCTION



Scan to read our newsletters online

CMT Design and Construction Ltd has been in the construction industry for more than a decade delivering residential, commercial, hospitality, education, entertainment, and refurbishment projects all around London.

Contact Us

0 (20) 7840 0186

www.cmtconstruction.co.uk

4 Bedlam Mews, London SE11 6DF