

Project Info: *Fitzroy Hotel*

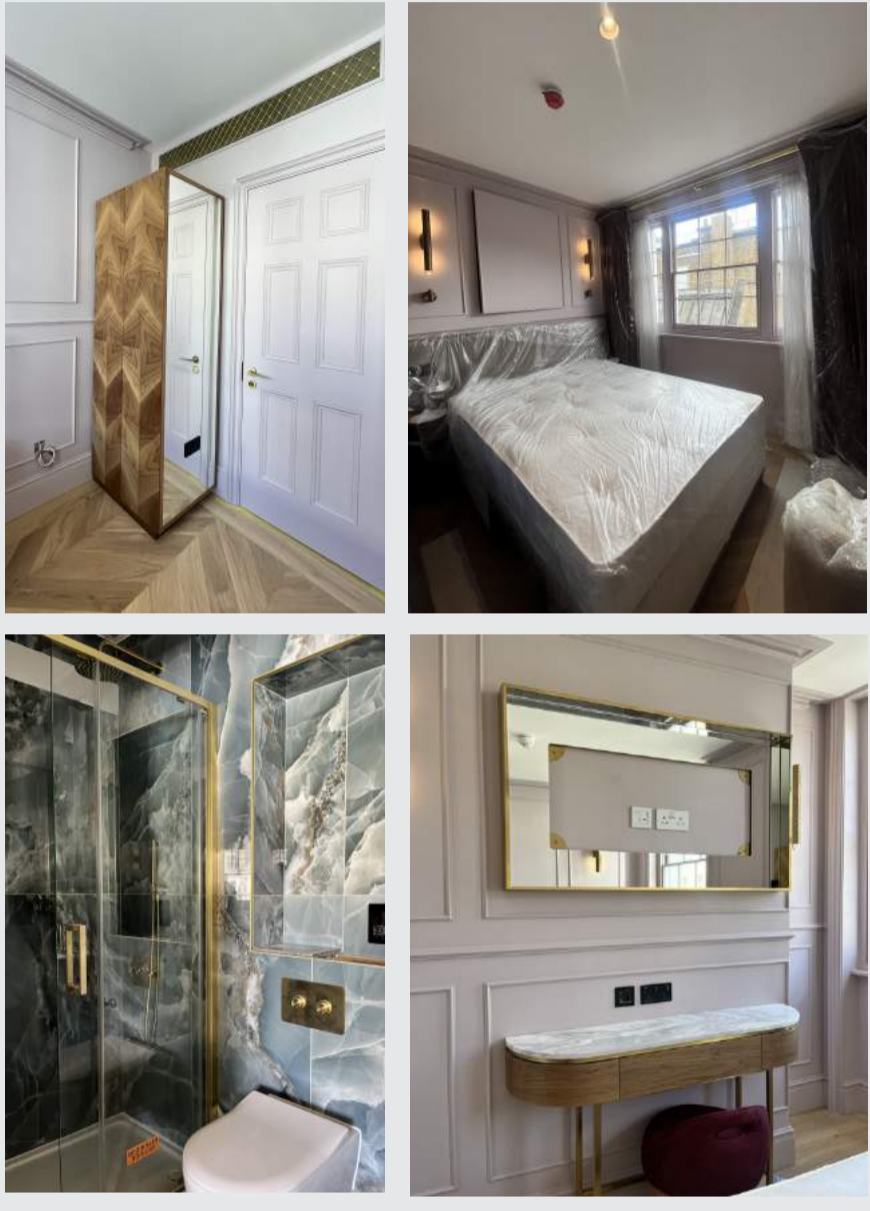
Project Progress

CMT Design and Construction is thrilled to share our nearly completed boutique hotel project at 41 Fitzroy Street, right in the heart of bustling London's West End. The installation of all the casegoods into the bedrooms have been successful to date and due for final completion over the next week.

This supply and installation of premium case goods by Analytics Bespoke Furniture not only enhances the functionality of each room but also elevates the overall comfort and style of the hotel. From elegant bedside tables to spacious wardrobes, every piece has been thoughtfully chosen to complement the luxurious ambiance.

We are one step closer to offering our guests a truly unforgettable experience. We are confident that our boutique hotel will exceed expectations and set a new standard of hospitality in the area.

We extend our sincerest gratitude to our team, subcontractors and partners for their unwavering dedication and hard work throughout this project. Without their expertise and commitment, this remarkable transformation would not have been possible. Thank you for your continued support and trust in CMT Design and Construction and we now have one final push to completion.



Interview with Kethy Chengan - Project Quantity Surveyor on his final project with CMT Design & Construction before moving on at his new job

1. How was your experience with the design and construction teams?

"The design team showed great attention to detail and our construction team demonstrated significant effort and hard work, resulting in a high-quality finish."

2. Any memorable moments during the development?

"The procurement was tricky due to heritage requirements and site logistics, but unveiling of the front façade was exciting."

3. How did you collaborate with the team to ensure project satisfaction?

"Daily communication via Monday.com and group chats, supplemented by weekly catch-up meetings on Teams."

4. What were the main challenges faced?

"The monitoring of client changes was challenging as they occurred as the project progressed."

5. What aspects of the project surpassed your expectations?

"The external tuck pointing, and internal decorative finishes exceeded my expectations."

6. Any lessons learned for future projects?

"Procurement should take a leading role and be of prime focus, especially when design finalisation is delayed."



Interior Designer: Studio Escolme
Architects: Dry Architects
Structural Engineers: Barden Chapman
M&E Consultants: BSEC Design

CMT
CONSTRUCTION



Scan to read our newsletters online

CMT Design and Construction Ltd has been in the construction industry for more than a decade delivering residential, commercial, hospitality, education, entertainment, and refurbishment projects all around London.

Contact Us

0 (20) 7840 0186

www.cmtconstruction.co.uk

4 Bedlam Mews, London SE11 6DF