



## Project Info: *LEE HIGH ROAD*

Our new project at 152a Lee High Road has now topped out and we have commenced the work to install the external façade and roof coverings. The building's frame is made from a mix of reinforced concrete and structural steelwork and will provide 17 residential units and 2 commercial units at ground and basement levels.

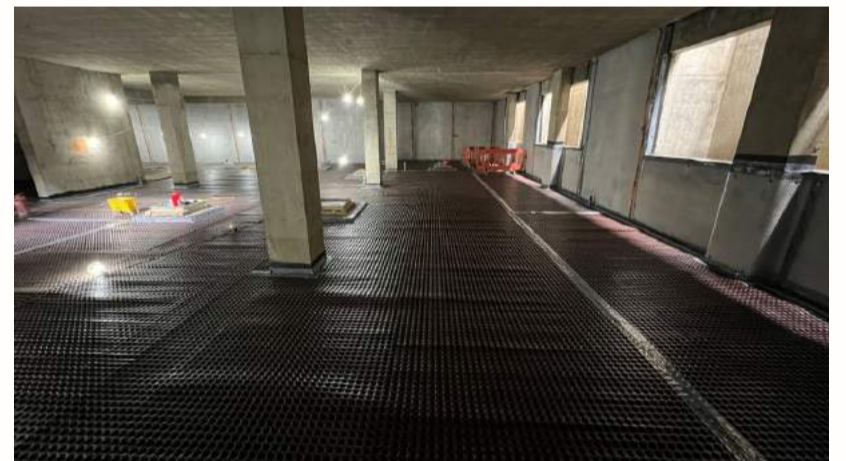
Whilst progress on site continues, we are also working on ensuring we achieve a BREEAM completion level of outstanding, which has already been achieved at design stage.

The site is registered with the Considerate Contractors Scheme, and we also are working the local authority to provide employment and opportunities for local residents and people from a disadvantaged background.



Client: [Lee High Development Limited](#)  
Architects: [Tone Design Ltd.](#)  
Structural Engineers: [Rise Engineering Ltd.](#)  
M&E Consultants: [BSEC Design Ltd.](#)

## Progress Update



Internally, we are working in the basement with blockwork and waterproofing. We plan to start internal fit-out to our flats as soon as the roofing is in place.

Our primary goal is to provide suitable quality spaces with careful attention to detail, ensuring good quality housing at affordable rates. We look forward to updating you further as we progress in the coming weeks.

**CMT**  
CONSTRUCTION

CMT Design and Construction Ltd has been in the construction industry for more than a decade delivering residential, commercial, hospitality, education, entertainment, and refurbishment projects all around London.

### Contact Us

0 (20) 7840 0186 • [www.cmtconstruction.co.uk](http://www.cmtconstruction.co.uk) • 4 Bedlam Mews, London SE11 6DF