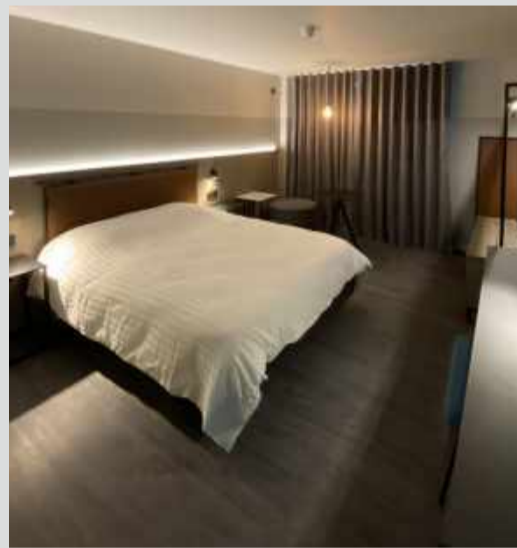




## Project Info: *93 BURLEIGH GARDENS*



After our successful planning appeal in June 2022, we have now extended the hotel construction to include another 38 rooms on a fourth level and a four-story extension at the rear. This extra space has already been created and now has started to be fitted out as guest rooms. Externally our cladding system has been designed and has commenced installation, soon we will be installing the final brick slips and aluminium panels.

Internally we are now installing joinery into three "mock up rooms" so we can choose with the Client their preferred final finish. The mock-up rooms are coming together beautifully and are now in the final stages still, however there are a few minor adjustments needed to be done.

Client: [Palmer's Green Investments Ltd](#)  
Architects: [Maith Design](#)  
Structural Engineers: [JMS Group](#)  
M&E Consultants: [BSEC Design](#)



On January 4, in honour of World Braille Day, we conducted training sessions for our staff at our sites to increase awareness of the significance of human rights for those who are blind or visually impaired. As part of the awareness, we gave guidance on how they can read the braille alphabet.

**CMT**  
CONSTRUCTION



Scan to read our newsletters online

CMT Design and Construction Ltd has been in the construction industry for more than a decade delivering residential, commercial, hospitality, education, entertainment, and refurbishment projects all around London.

### Contact Us

0 (20) 7840 0186

[www.cmtconstruction.co.uk](http://www.cmtconstruction.co.uk)

4 Bedlam Mews, London SE11 6DF