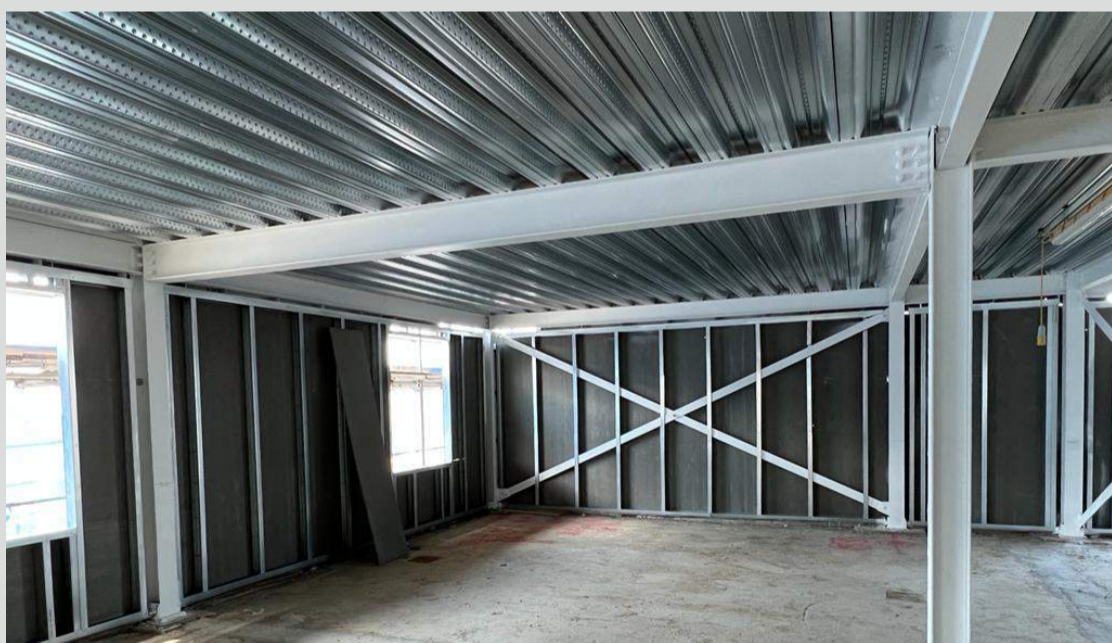




## Project Info: *93 BURLEIGH GARDENS*

## Progress Update



Welcome to the fourth newsletter to keep you informed on our project coming up in Southgate. The previous month has been productive with 7 subcontractors on site. Our groundwork subcontractor, MFG have completed the infrastructure works and all drainage system has been inspected with CCTV. The bricklaying work is completed on ground to second floors and window infill in these floors is also finished. Intumescent paint work will be finishing in this week. With the scaffold up, the site management ensures that it is safe for the workers to access all floors and follow all health and safety protocols.

For the next month, the lift shaft wall which is completed up to second floor now will go on to the third floor and the roof level. This month will also experience the completion of Steel Frame Systems. Other packages starting next month are drylining and mechanical and electrical works.

Client: [Palmers Green Investments Ltd](#)  
Architects: [Maith Design](#)  
Structural Engineers: [JMS Group](#)  
M&E Consultants: [BSEC Design](#)

On the occasion of Earth Day, Apr 22, the site management did a seminar and quiz on plastic pollution and the winners were rewarded with locally sourced fruits. We also had a workshop on 15th May for Mental Health Awareness week where the theme was Loneliness and the workforce was made aware of how they can manage loneliness and also gave ideas on preparing a wellbeing plan.

**CMT**  
CONSTRUCTION

CMT Design and Construction Ltd has been in the construction industry for more than a decade delivering residential, commercial, hospitality, education, entertainment, and refurbishment projects all around London.



Scan to read our newsletters online

### Contact Us

0 (20) 7840 0186

[www.cmtconstruction.co.uk](http://www.cmtconstruction.co.uk)

4 Bedlam Mews, London SE11 6DF